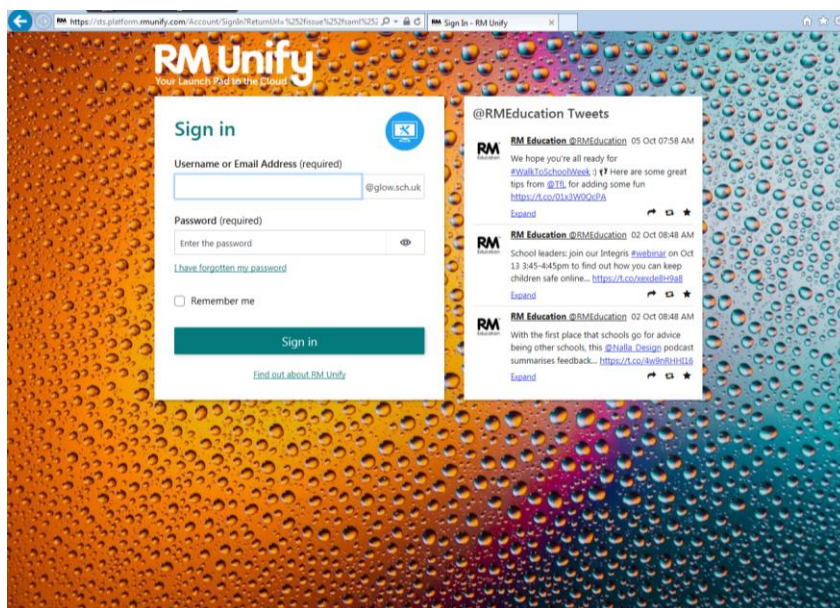
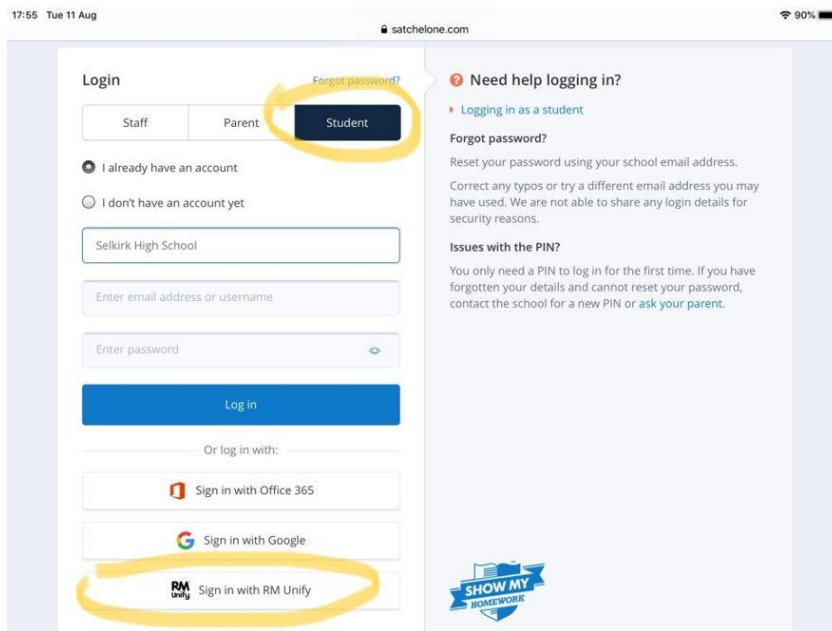


Satchel One



1. Accessing Satchel One

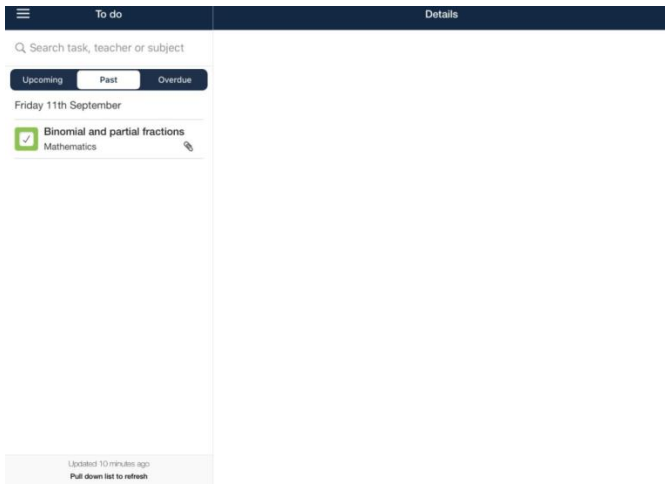
All students should have a Satchel One app downloaded from self-service. There is also a website – the website works more consistently and is recommended. Students sign in using their glow username and password (RM Unify). **Parents have a unique code to sign in too. Please contact shshomelearning@glow.sch.uk or the school office if you do not have yours.**



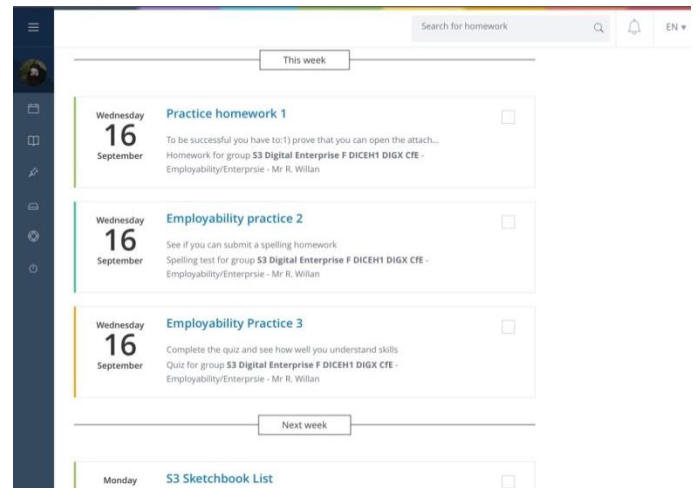
2. Tasks

The list of tasks is found on the dashboard, organised by date due.

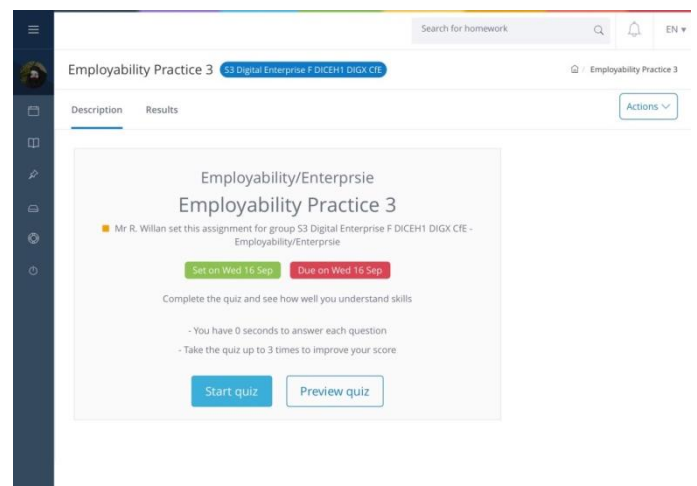
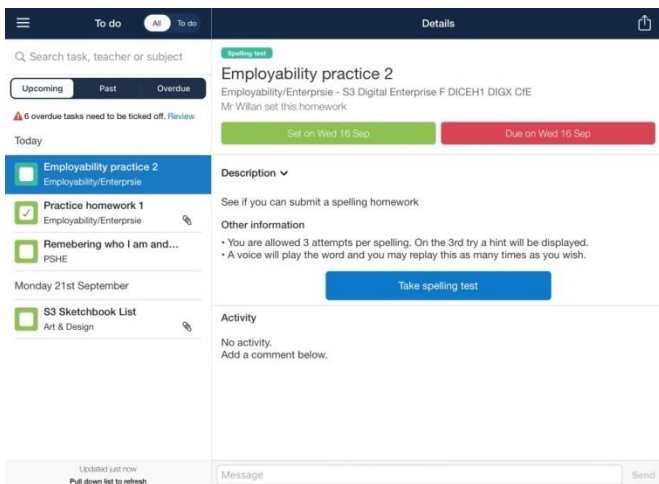
App view:



Website view:



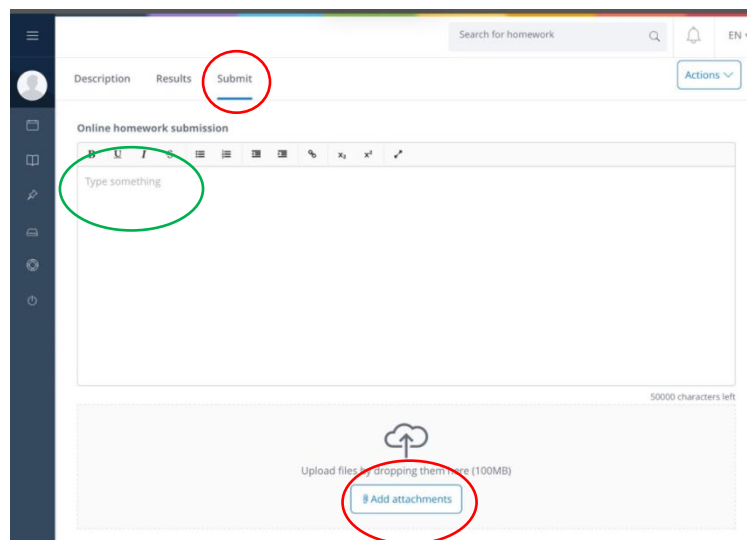
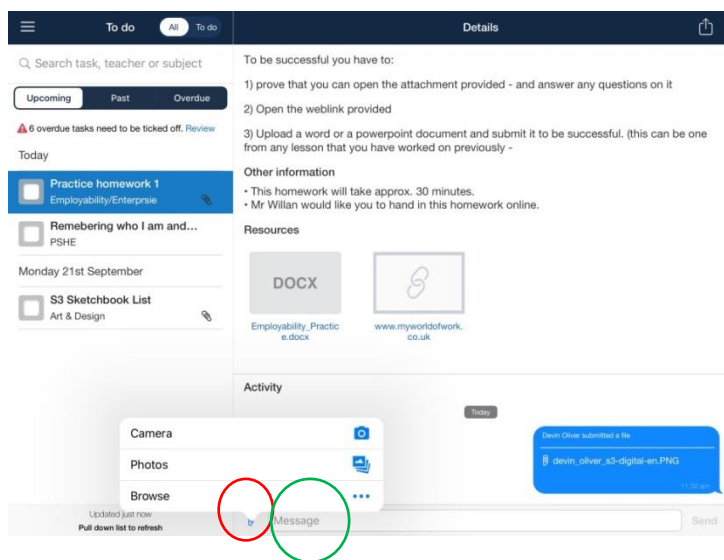
Selecting the task will give more information



Some tasks will be completed in Show My Homework. However, others may have attachments or send you to another resource such as Teams. Where possible, links and hyperlinks will be used to take you direct to the activity.

3. Attaching work

Some tasks will involve **attaching** a piece of work for marking and feedback.



This is also where students can **ask** their teacher questions. On the website, the view changes after submission / marking slightly but students can still message.

