



Our HMIE Inspection

- a brief summary -

1. HMIE are confident the school has the capacity for continued improvement- no further visit is required. This has not been the case for 3 recently inspected SBC secondary schools so...Phew! You can see the summary letter, full report and inspection survey results by following this link:

[Selkirk High School | Inspection Report | Education Scotland](#)

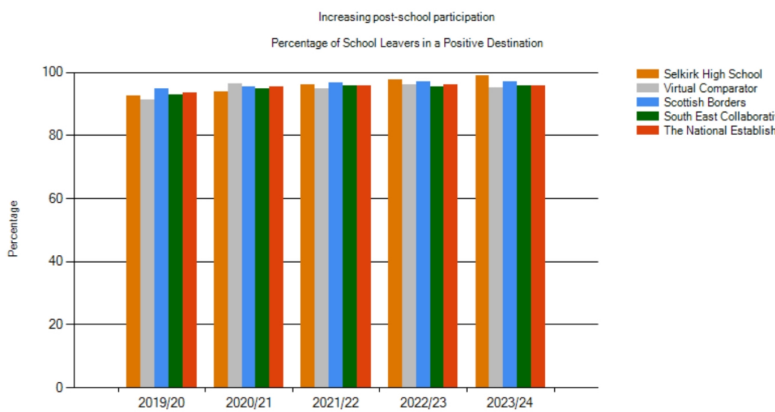
2. HMIE have evaluated the Learning, Teaching and assessment at SHS as 'Good'. We are pleased with this because we have focused explicitly on moving from 'satisfactory' to 'good' by developing real consistency in the quality of teaching across the school and developing our positive and nurturing approaches which HMIE identified as a real strength in the school. We feel the areas identified for development are in line with our own evaluations. Next stop: Very Good!
3. HMIE have evaluated Attainment and Achievement at SHS as 'Satisfactory'. We know that attainment in the last 2 years has not been strong in some areas. HMIE were very focused on traditional measures of attainment and we felt our students' wider achievements and destinations could have had greater weighting. Nevertheless, we take everything on board and are very confident of significant improvement this year (although we need to point out that small school attainment percentages can fluctuate a lot). We are very disappointed that HMIE did not consider our latest Scotgov Leavers' data which is exceptionally strong. Although this was available before they drafted the report, it was not available during the visit. We feel this would have changed the report considerably. Frustrating! You can see this data below. We are very proud of this indeed. Next stop: Very Good!
4. We experienced the short model inspection. The longer model, which we would have preferred, really focuses on our strengths such as our meaningful curriculum, our skills development and our approach to supporting individuals. Ironically, there is national recognition that the Inspection model is out of date and HMIE as we know it will cease to exist later this year!
5. According to the Managing Inspector, SHS had amongst the strongest survey results she had seen in a secondary school (you can find this by following the link above). We are delighted at the amazing support of our school shown by pupils, parents, partners and staff.
6. By the way, SHS is getting quite a name for itself for its wide and meaningful curriculum. Our most recent data (which you can see below) really shows the impact of this. You can catch up on recent features on national television by following the links below

[BBC LANDWARD SELKIRK HS](#)

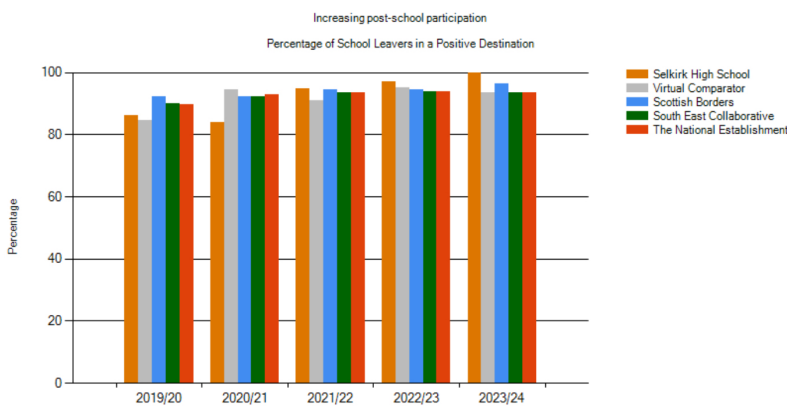
[BBC NEWS SELKIRK HS ESPORTS](#)

**HMIE did not see our most recent Data because it was published just after they left.
This is really annoying because it's extremely positive and really shows the impact of our curriculum!**

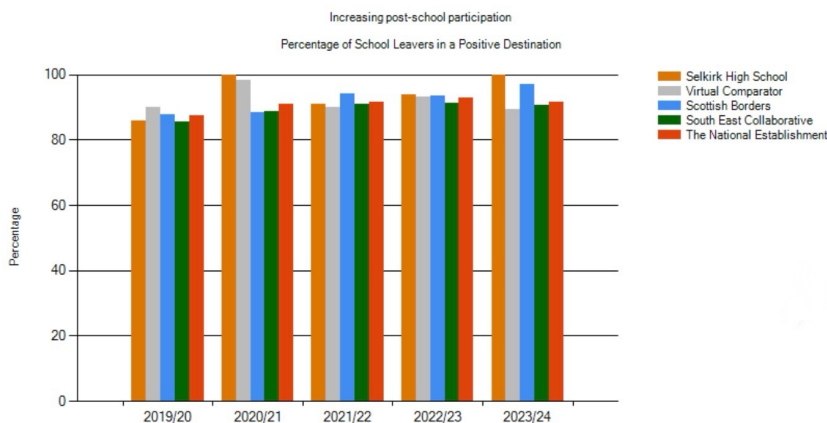
POSITIVE DESTINATIONS



You can see from the chart opposite that a very high percentage of Selkirk High School leavers (the orange bar) go on to a positive destination when they leave school. This is higher than our virtual comparator which compares our young people to similar pupils across the country. It is also higher than SBC and Scotland as a whole. There's also a positive trend. This is fantastic!

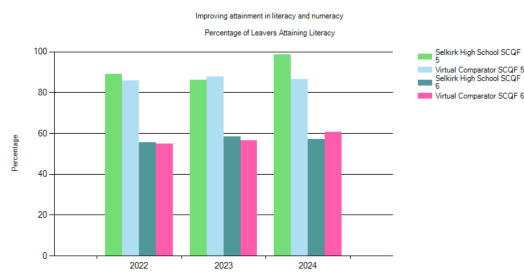
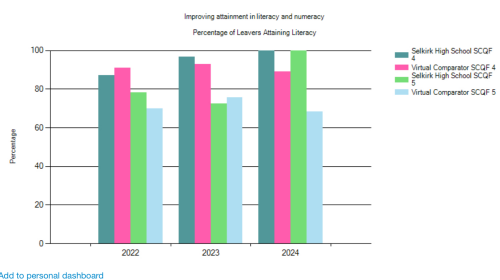
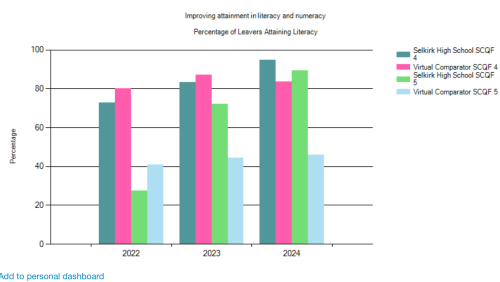


It's fantastic to see the improving trend for our students with additional support needs too, 100% of whom achieved a positive destination last year.



We are also seeing a pattern of post Covid improvement in the percentage of young people who come from the most disadvantaged backgrounds. 100% last year achieved a positive destination - another post-Covid pattern of improvement.

Literacy and Numeracy



S4 Literacy and Numeracy

The % of SHS S4 pupils gaining level 4 (dark green bar) is compared to the virtual comparator (pink bar). The performance of SHS pupils at Level 5 (light green bar) is compared to the virtual comparator (light blue bar). The virtual comparator is the performance of students across the country with a similar profile to our students.

SHS students are doing really well compared to the performance of students elsewhere in Literacy and Numeracy!

S5 Literacy and Numeracy

The % of SHS S5 pupils gaining level 4 (dark green bar) is compared to the virtual comparator (pink bar). The performance of SHS pupils at Level 5 (light green bar) is compared to the virtual comparator (light blue bar). The virtual comparator is the performance of students across the country with a similar profile to our students.

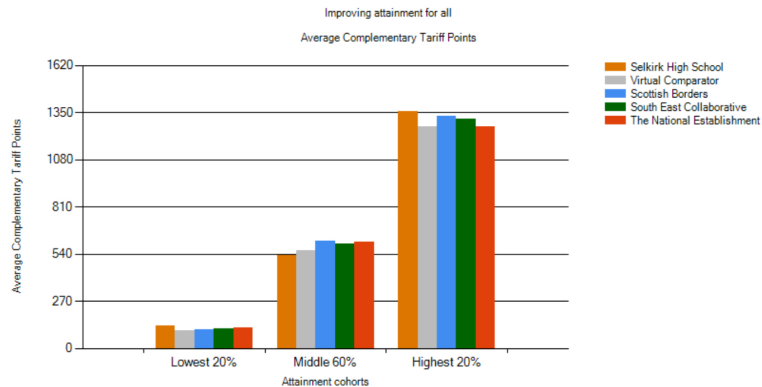
SHS students are doing really well compared to the performance of students elsewhere in Literacy and Numeracy!

S5 and S6 Literacy and Numeracy

The % of SHS S5 and S6 pupils gaining level 5 (light green bar) is compared to the virtual comparator (light blue bar). The performance of SHS pupils at Level 6 (dark green bar) is compared to the virtual comparator (pink bar). The virtual comparator is the performance of students across the country with a similar profile to our students.

SHS students are generally doing better - or are in line with- students with a similar profile elsewhere.

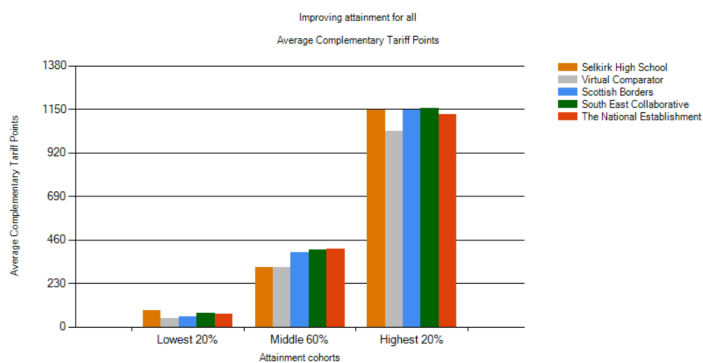
Attainment - all subjects



S4/5/6 Leavers' Attainment

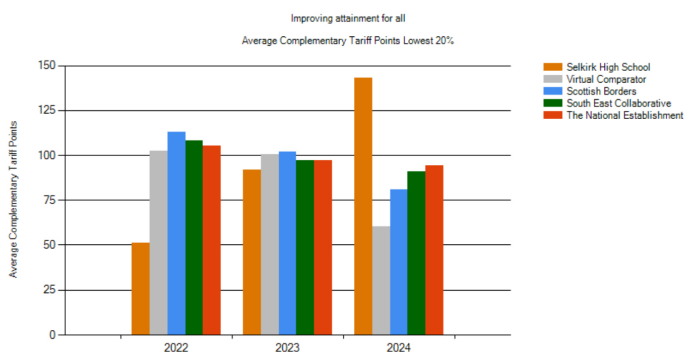
This bar chart compares the performance of Selkirk S4/5/6 leavers (orange) to our virtual comparator (grey). We're pretty much in line although it's good to see how well our highest attainers are doing compared to their peers elsewhere.

The selected year is 2024



Students with Additional Support Needs

It's also great to see how well our students who have additional support needs are doing compared with students with similar profiles in other schools (orange vs grey).



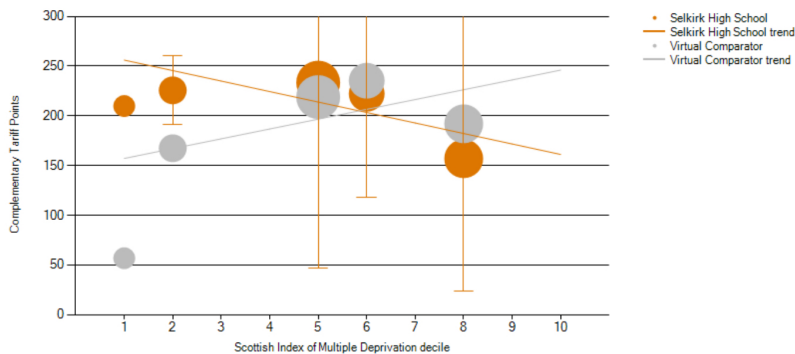
Students in the lowest 20% doing brilliantly

Another really satisfying thing about this data is the 3 year improvement in how well our lowest 20% perform. Opposite, you can see how significantly stronger (orange) they did this year in S5 compared with students in this category elsewhere. There is a really positive trend in S4 as well.

Attainment vs Deprivation

Tackling disadvantage by improving the attainment of lower attainers relative to higher attainers

Attainment versus Deprivation

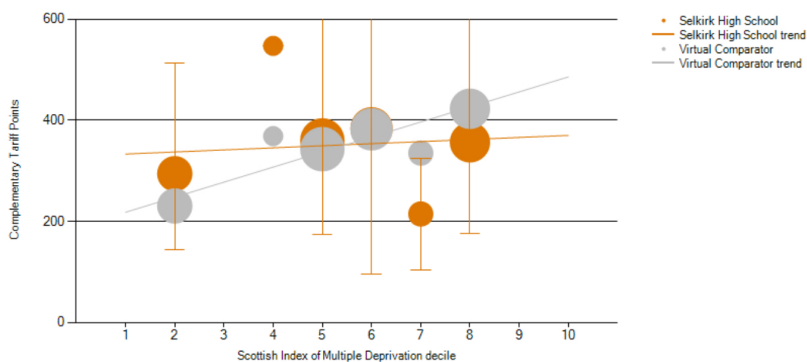


S4 Attainment vs Deprivation

The scotgov measure of deprivation is quite clumsy and is based on post code and access to free school meals etc. This is shown on the scale at the bottom (from most to least deprived 1-10). Selkirk students (orange blobs) are significantly above their virtual comparator (grey blobs) for our 'most deprived' students- and actually do as well or better than their more affluent peers!

Tackling disadvantage by improving the attainment of lower attainers relative to higher attainers

Attainment versus Deprivation

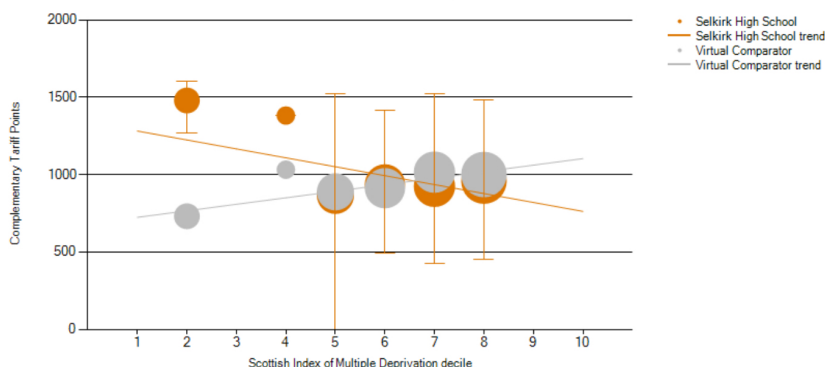


S5 Attainment vs Deprivation

Again, the scotgov measure of deprivation is shown on the scale at the bottom (from most to least deprived 1-10). Selkirk students (orange blobs) are above their virtual comparator (grey blobs) for our 'most deprived' students- and their performance is in line with their peers from more affluent backgrounds.

Tackling disadvantage by improving the attainment of lower attainers relative to higher attainers

Attainment versus Deprivation



S6 Attainment vs Deprivation

In S6, leavers from the most deprived backgrounds (according to scotgov measures) actually did better than their more affluent peers and very much better than peers from similar backgrounds in other schools. Amazing!